

Treasuring our History...



Preserving our Legacy



2018 by the numbers



\$47.4 million expense budget

2.6% of county budget

76% operating cost covered by revenues ... national average is 31%

\$11.7 million tax levy

\$39 per resident annual cost

\$350 million asset
(not including land value)

\$183 million positive impact on the local economy



Accredited Agencies



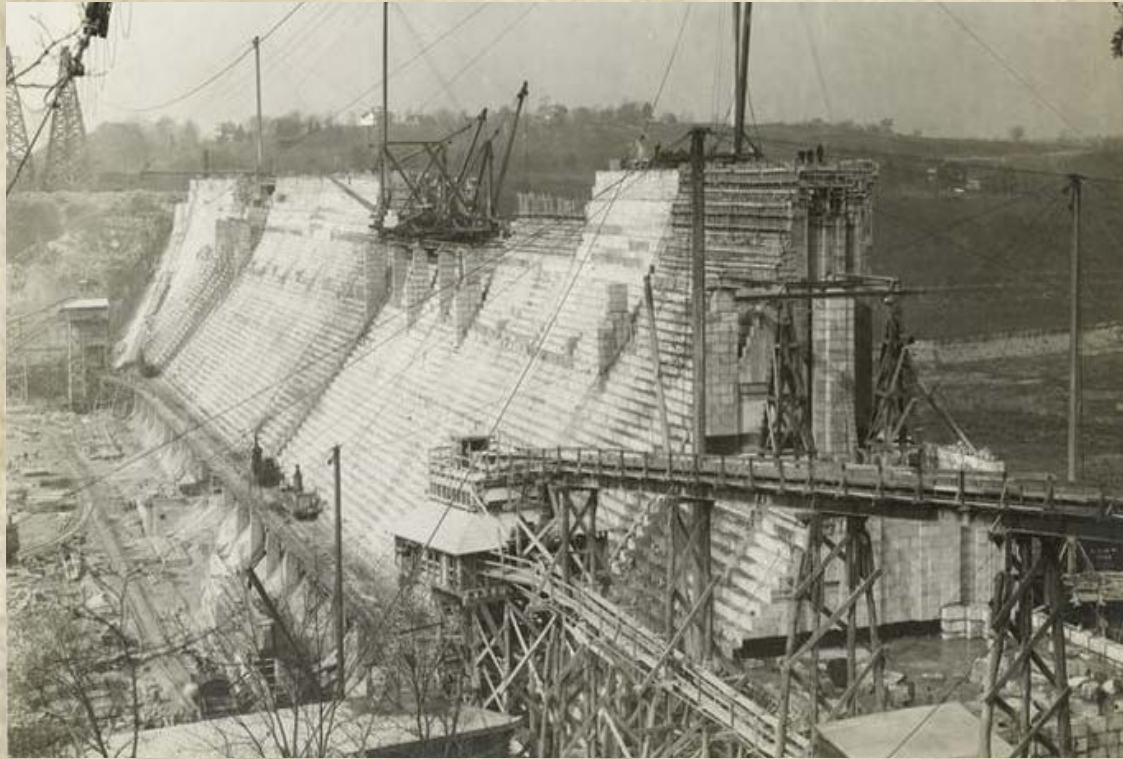
A glance at any map of Westchester reveals a great deal about our county's love of greenspace. We in the Department of Parks, Recreation and Conservation take great pride in our leading role in protecting and preserving our large portion of that greenspace: the vast network of parks, recreation spaces, shorelines, trailways and nature preserves that have been entrusted to our care. **Our commitment to preserving our "green" legacy is unwavering.** Honoring our past guides us as we move forward to keep pace with the needs and demands of county residents as the 21st century marches on.

In 2003, we as a department realized the need to be held accountable to ourselves and the public by seeking and attaining accreditation through the National Recreation and Parks Association (NRPA). We have since been **reaccredited twice** and continue to provide the best standards available in our industry. Additionally, we remain the only county park and recreation agency in New York State to achieve NRPA accreditation.

Our mission is to create life-enriching experiences at safe, clean affordable parks and preserve our natural resources through responsible leadership. We use our mantra to encourage every Westchester County resident and our millions of visitors to **"Go Out and Play"** every chance they get as we work continuously to preserve and build on the priceless Westchester County Parks system.

From the earliest days **100 years ago** when Westchester residents splashed around in ponds created by damming the Bronx River at Bronxville and Scarsdale, to today when recreation providers use creativity and

Kensico Dam under construction



technology to incorporate **modern amenities for our residents**, one thing has remained constant: **we build upon the legacy** of our parks and recreation visionaries who have paved the way.



Kensico Dam Plaza today

Lasdon estate, Somers



Our open space holdings are vast, with **18,000 acres** of county parkland and more than **50 parks** and recreation facilities. But to keep pace with the recreation needs of a diverse community we use our ability to innovate so that these open spaces – many of which have been

operational as parks and recreation spaces for nearly a century – remain **relevant** and attract users of all ages, income levels and interests. A look at our department's entire history, reveals **innovation every step of the way.**



Lasdon Conservatory today



Bronx River

Tibbets Brook Park, Yonkers



In the early 1960s it became apparent to county officials that our forerunner organizations, the Westchester Parks Commission and Recreation Commission, had many **common and interdependent goals** - so they were merged, creating the Department of Parks, Recreation and Conservation.

When trends suggested that pool users were looking for more splash-down, keep-cool, family-friendly fun in the water, we transformed two traditional rectangular pools into **family aquatic centers** while renewing the commitment to the traditional swimmer and need for competition space.



Sprain Ridge Pool, Yonkers

Tibbets Brook Park, Yonkers



Space from old rail beds became available and were transformed over the last three decades into a network of the multi-use recreational North and South County Trailway whose **popularity is unsurpassed** and complements the original pathways of the Bronx River Parkway Reservation.

North County Trailways



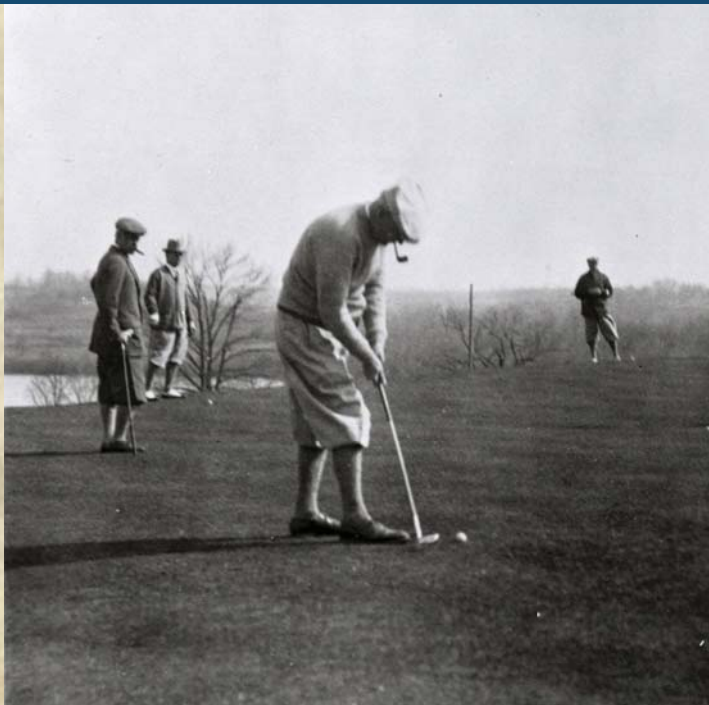


Technology has been harnessed to allow the Westchester County Center, going strong as a **civic center** and show space since 1930, to evolve into a **modern venue** for sports, stage and concert performances and more.



*Westchester County Center,
White Plains*

For our community's **love of golf**, we carefully maintain and renovate the courses that have been in our department's care since the formative years, adding driving ranges, video instruction, satellite navigation and other amenities.



*Mohansic Golf Course,
Yorktown Heights*





A review of historic Playland Park, which opened in 1928, has resulted in an investment to rebuild its infrastructure to keep the **amusement park experience thriving** for generations to come.

Playland Park, Rye



Spend time with supportive Friends...

County residents are enthusiastic members of these and other organizations that work to enhance our parks.



Go Out and Play!

